



## Constant volume flow controller 150-600 Pa, socket connection

### Popis

pressure range 150-600 Pa, volume flow 90-1100 m<sup>3</sup>/h

### PVC

#	d	L	L1	L2	L3	s PVC	s PP-Basis
1	0160m	152	26	39	87	4,0	3,5
2	0200m	170	38	50	82	4,0	3,5
3	0250m	170	38	50	82	4,0	3,5

### PPs

#	d	L	L1	L2	L3	s PVC	s PP-Basis
1	0160m	152	26	39	87	4,0	3,5
2	0200m	170	38	50	82	4,0	3,5
3	0250m	170	38	50	82	4,0	3,5

### PP

#	d	L	L1	L2	L3	s PVC	s PP-Basis
1	0160m	152	26	39	87	4,0	3,5
2	0200m	170	38	50	82	4,0	3,5
3	0250m	170	38	50	82	4,0	3,5

### PE

#	d	L	L1	L2	L3	s PVC	s PP-Basis
1	0160m	152	26	39	87	4,0	3,5
2	0200m	170	38	50	82	4,0	3,5
3	0250m	170	38	50	82	4,0	3,5

## PPs-el

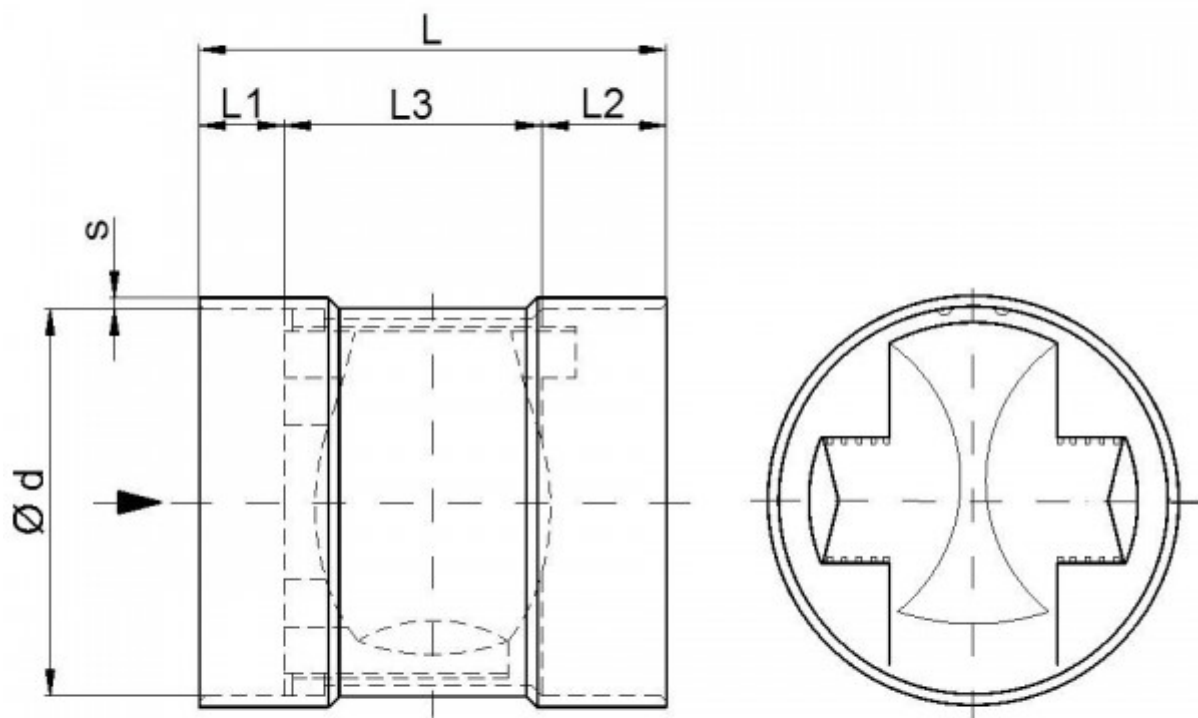
#	d	L	L1	L2	L3	s PVC	s PP-Basis
1	0160m	152	26	39	87	4,0	3,5
2	0200m	170	38	50	82	4,0	3,5
3	0250m	170	38	50	82	4,0	3,5

## PVDF

#	d	L	L1	L2	L3	s PVC	s PP-Basis
1	0160m	152	26	39	87	4,0	3,5
2	0200m	170	38	50	82	4,0	3,5
3	0250m	170	38	50	82	4,0	3,5

## PVC-UV

#	d	L	L1	L2	L3	s PVC	s PP-Basis
1	0160m	152	26	39	87	4,0	3,5
2	0200m	170	38	50	82	4,0	3,5
3	0250m	170	38	50	82	4,0	3,5



---

Technické údaje o produktech nejsou závazné. Konstrukční a rozměrové změny vyhrazeny.  
Přeloženo z originálu výrobce.

Farprosys, s.r.o.  
email: [info@farprosys.com](mailto:info@farprosys.com)  
tel. +420 728 757 770  
[www.atexventilatory.cz](http://www.atexventilatory.cz)