

## Reducers asymmetrical 1000/500 to 1400/1250 MM



### Popis

socket connection

### PVC

#	d1 x d2	L	L1	L2	L3	X	s	s1
1	1000-0500	1055	110	60	885	250	8,0	4,0
2	1000-0560	*	*	*	*	*	*	*
3	1000-0600	895	110	70	715	200	8,0	5,0
4	1000-0630	*	*	*	*	*	*	*
5	1000-0700	750	110	90	550	150	8,0	6,0
6	1000-0710	*	*	*	*	*	*	*
7	1000-0800	585	110	100	375	100	8,0	6,0
8	1000-0900	420	110	110	200	50	8,0	7,0
9	1200-0600	*	*	*	*	*	*	*
10	1200-0630	*	*	*	*	*	*	*
11	1200-0700	*	*	*	*	*	*	*
12	1200-0710	*	*	*	*	*	*	*
13	1200-0800	*	*	*	*	*	*	*
14	1200-0900	*	*	*	*	*	*	*
15	1200-1000	*	*	*	*	*	*	*
16	1250-0600	1305	125	55	1125	325	10,0	5,0
17	1250-0630	*	*	*	*	*	*	*
18	1250-0700	1160	125	80	955	275	10,0	6,0
19	1250-0710	*	*	*	*	*	*	*
20	1250-0800	985	125	80	780	225	10,0	6,0
21	1250-0900	830	125	100	605	175	10,0	7,0
22	1250-1000	685	125	125	435	125	10,0	8,0
23	1400-0700	1470	175	80	1215	350	10,0	6,0
24	1400-0710	*	*	*	*	*	*	*
25	1400-0800	1295	175	80	1040	300	10,0	6,0
26	1400-0900	1140	175	100	865	250	10,0	7,0
27	1400-1000	995	175	125	695	200	10,0	8,0
28	1400-1250	560	175	125	260	75	10,0	10,0

## PPs

#	d1 x d2	L	L1	L2	L3	X	s	s1
1	1000-0500	1060	110	60	890	250	10,0	6,0
2	1000-0560	990	110	90	790	220	10,0	6,0
3	1000-0600	*	*	*	*	*	*	*
4	1000-0630	870	110	90	670	185	10,0	6,0
5	1000-0700	*	*	*	*	*	*	*
6	1000-0710	725	110	90	525	145	10,0	8,0
7	1000-0800	580	110	100	370	100	10,0	8,0
8	1000-0900	420	110	110	200	50	10,0	8,0
9	1200-0600	*	*	*	*	*	*	*
10	1200-0630	*	*	*	*	*	*	*
11	1200-0700	*	*	*	*	*	*	*
12	1200-0710	*	*	*	*	*	*	*
13	1200-0800	*	*	*	*	*	*	*
14	1200-0900	*	*	*	*	*	*	*
15	1200-1000	*	*	*	*	*	*	*
16	1250-0600	*	*	*	*	*	*	*
17	1250-0630	1300	125	100	1075	310	10,0	6,0
18	1250-0700	*	*	*	*	*	*	*
19	1250-0710	1160	125	100	935	270	10,0	8,0
20	1250-0800	1030	125	125	780	225	10,0	8,0
21	1250-0900	855	125	125	605	175	10,0	10,0
22	1250-1000	685	125	125	435	125	10,0	10,0
23	1400-0700	*	*	*	*	*	*	*
24	1400-0710	1470	175	100	1195	345	12,0	8,0
25	1400-0800	1340	175	125	1040	300	12,0	8,0
26	1400-0900	1165	175	125	865	250	12,0	8,0
27	1400-1000	995	175	125	695	200	12,0	10,0
28	1400-1250	560	175	125	260	75	12,0	10,0

## PP

#	d1 x d2	L	L1	L2	L3	X	s	s1
1	1000-0500	1060	110	60	890	250	10,0	6,0
2	1000-0560	990	110	90	790	220	10,0	6,0
3	1000-0600	*	*	*	*	*	*	*
4	1000-0630	870	110	90	670	185	10,0	6,0
5	1000-0700	*	*	*	*	*	*	*
6	1000-0710	725	110	90	525	145	10,0	8,0
7	1000-0800	580	110	100	370	100	10,0	8,0
8	1000-0900	420	110	110	200	50	10,0	8,0
9	1200-0600	*	*	*	*	*	*	*
10	1200-0630	*	*	*	*	*	*	*
11	1200-0700	*	*	*	*	*	*	*
12	1200-0710	*	*	*	*	*	*	*
13	1200-0800	*	*	*	*	*	*	*
14	1200-0900	*	*	*	*	*	*	*
15	1200-1000	*	*	*	*	*	*	*
16	1250-0600	*	*	*	*	*	*	*
17	1250-0630	1300	125	100	1075	310	10,0	6,0
18	1250-0700	*	*	*	*	*	*	*
19	1250-0710	1160	125	100	935	270	10,0	8,0
20	1250-0800	1030	125	125	780	225	10,0	8,0
21	1250-0900	855	125	125	605	175	10,0	10,0
22	1250-1000	685	125	125	435	125	10,0	10,0
23	1400-0700	*	*	*	*	*	*	*
24	1400-0710	1470	175	100	1195	345	12,0	8,0
25	1400-0800	1340	175	125	1040	300	12,0	8,0
26	1400-0900	1165	175	125	865	250	12,0	8,0
27	1400-1000	995	175	125	695	200	12,0	10,0
28	1400-1250	560	175	125	260	75	12,0	10,0

## PE

#	d1 x d2	L	L1	L2	L3	X	s	s1
1	1000-0500	1060	110	60	890	250	10,0	6,0
2	1000-0560	990	110	90	790	220	10,0	6,0
3	1000-0600	*	*	*	*	*	*	*
4	1000-0630	870	110	90	670	185	10,0	6,0
5	1000-0700	*	*	*	*	*	*	*
6	1000-0710	725	110	90	525	145	10,0	8,0
7	1000-0800	580	110	100	370	100	10,0	8,0
8	1000-0900	420	110	110	200	50	10,0	8,0
9	1200-0600	*	*	*	*	*	*	*
10	1200-0630	*	*	*	*	*	*	*
11	1200-0700	*	*	*	*	*	*	*
12	1200-0710	*	*	*	*	*	*	*
13	1200-0800	*	*	*	*	*	*	*
14	1200-0900	*	*	*	*	*	*	*
15	1200-1000	*	*	*	*	*	*	*
16	1250-0600	*	*	*	*	*	*	*
17	1250-0630	1300	125	100	1075	310	10,0	6,0
18	1250-0700	*	*	*	*	*	*	*
19	1250-0710	1160	125	100	935	270	10,0	8,0
20	1250-0800	1030	125	125	780	225	10,0	8,0
21	1250-0900	855	125	125	605	175	10,0	10,0
22	1250-1000	685	125	125	435	125	10,0	10,0
23	1400-0700	*	*	*	*	*	*	*
24	1400-0710	1470	175	100	1195	345	12,0	8,0
25	1400-0800	1340	175	125	1040	300	12,0	8,0
26	1400-0900	1165	175	125	865	250	12,0	8,0
27	1400-1000	995	175	125	695	200	12,0	10,0
28	1400-1250	560	175	125	260	75	12,0	10,0

## PPs-el

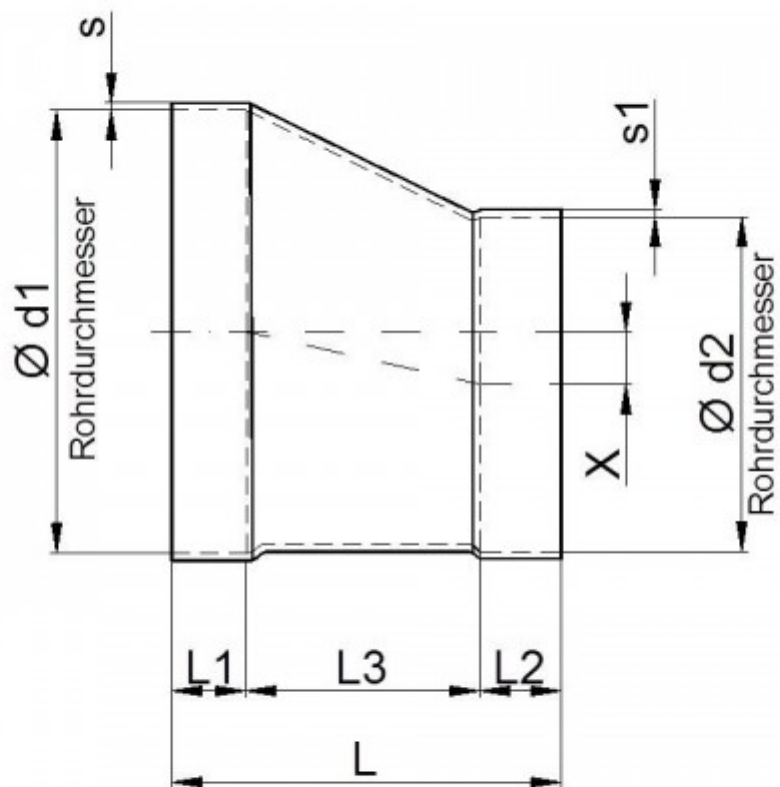
#	d1 x d2	L	L1	L2	L3	X	s	s1
1	1000-0500	1060	110	60	890	250	10,0	6,0
2	1000-0560	990	110	90	790	220	10,0	6,0
3	1000-0600	*	*	*	*	*	*	*
4	1000-0630	870	110	90	670	185	10,0	6,0
5	1000-0700	*	*	*	*	*	*	*
6	1000-0710	725	110	90	525	145	10,0	8,0
7	1000-0800	580	110	100	370	100	10,0	8,0
8	1000-0900	420	110	110	200	50	10,0	8,0
9	1200-0600	*	*	*	*	*	*	*
10	1200-0630	*	*	*	*	*	*	*
11	1200-0700	*	*	*	*	*	*	*
12	1200-0710	*	*	*	*	*	*	*
13	1200-0800	*	*	*	*	*	*	*
14	1200-0900	*	*	*	*	*	*	*
15	1200-1000	*	*	*	*	*	*	*
16	1250-0600	*	*	*	*	*	*	*
17	1250-0630	1300	125	100	1075	310	10,0	6,0
18	1250-0700	*	*	*	*	*	*	*
19	1250-0710	1160	125	100	935	270	10,0	8,0
20	1250-0800	1030	125	125	780	225	10,0	8,0
21	1250-0900	855	125	125	605	175	10,0	10,0
22	1250-1000	685	125	125	435	125	10,0	10,0
23	1400-0700	*	*	*	*	*	*	*
24	1400-0710	1470	175	100	1195	345	12,0	8,0
25	1400-0800	1340	175	125	1040	300	12,0	8,0
26	1400-0900	1165	175	125	865	250	12,0	8,0
27	1400-1000	995	175	125	695	200	12,0	10,0
28	1400-1250	560	175	125	260	75	12,0	10,0

## PVDF

#	d1 x d2	L	L1	L2	L3	X	s	s1
1	1000-0500	1060	110	60	890	250	10,0	6,0
2	1000-0560	990	110	90	790	220	10,0	6,0
3	1000-0600	*	*	*	*	*	*	*
4	1000-0630	870	110	90	670	185	10,0	6,0
5	1000-0700	*	*	*	*	*	*	*
6	1000-0710	725	110	90	525	145	10,0	8,0
7	1000-0800	580	110	100	370	100	10,0	8,0
8	1000-0900	420	110	110	200	50	10,0	8,0
9	1200-0600	*	*	*	*	*	*	*
10	1200-0630	*	*	*	*	*	*	*
11	1200-0700	*	*	*	*	*	*	*
12	1200-0710	*	*	*	*	*	*	*
13	1200-0800	*	*	*	*	*	*	*
14	1200-0900	*	*	*	*	*	*	*
15	1200-1000	*	*	*	*	*	*	*
16	1250-0600	*	*	*	*	*	*	*
17	1250-0630	1300	125	100	1075	310	10,0	6,0
18	1250-0700	*	*	*	*	*	*	*
19	1250-0710	1160	125	100	935	270	10,0	8,0
20	1250-0800	1030	125	125	780	225	10,0	8,0
21	1250-0900	855	125	125	605	175	10,0	10,0
22	1250-1000	685	125	125	435	125	10,0	10,0
23	1400-0700	*	*	*	*	*	*	*
24	1400-0710	1470	175	100	1195	345	12,0	8,0
25	1400-0800	1340	175	125	1040	300	12,0	8,0
26	1400-0900	1165	175	125	865	250	12,0	8,0
27	1400-1000	995	175	125	695	200	12,0	10,0
28	1400-1250	560	175	125	260	75	12,0	10,0

## PVC-UV

#	d1 x d2	L	L1	L2	L3	X	s	s1
1	1000-0500	1055	110	60	885	250	8,0	4,0
2	1000-0560	*	*	*	*	*	*	*
3	1000-0600	895	110	70	715	200	8,0	5,0
4	1000-0630	*	*	*	*	*	*	*
5	1000-0700	750	110	90	550	150	8,0	6,0
6	1000-0710	*	*	*	*	*	*	*
7	1000-0800	585	110	100	375	100	8,0	6,0
8	1000-0900	420	110	110	200	50	8,0	7,0
9	1200-0600	*	*	*	*	*	*	*
10	1200-0630	*	*	*	*	*	*	*
11	1200-0700	*	*	*	*	*	*	*
12	1200-0710	*	*	*	*	*	*	*
13	1200-0800	*	*	*	*	*	*	*
14	1200-0900	*	*	*	*	*	*	*
15	1200-1000	*	*	*	*	*	*	*
16	1250-0600	1305	125	55	1125	325	10,0	5,0
17	1250-0630	*	*	*	*	*	*	*
18	1250-0700	1160	125	80	955	275	10,0	6,0
19	1250-0710	*	*	*	*	*	*	*
20	1250-0800	985	125	80	780	225	10,0	6,0
21	1250-0900	830	125	100	605	175	10,0	7,0
22	1250-1000	685	125	125	435	125	10,0	8,0
23	1400-0700	1470	175	80	1215	350	10,0	6,0
24	1400-0710	*	*	*	*	*	*	*
25	1400-0800	1295	175	80	1040	300	10,0	6,0
26	1400-0900	1140	175	100	865	250	10,0	7,0
27	1400-1000	995	175	125	695	200	10,0	8,0
28	1400-1250	560	175	125	260	75	10,0	10,0



---

Technické údaje o produktech nejsou závazné. Konstrukční a rozměrové změny vyhrazeny.  
Přeloženo z originálu výrobce.

Farprosys, s.r.o.  
email: [info@farprosys.com](mailto:info@farprosys.com)  
tel. +420 728 757 770  
[www.atexventilatory.cz](http://www.atexventilatory.cz)